

Getting Into Nature!

Do you find it hard to compete with the lure of video games and blockbuster movies? According to the book "Last Child in the Woods" by renowned author Richard Louv, our current generation of youth is often denied the freedom of exploration and adventure in nature that past generations enjoyed. Your scouts may have had few opportunities to walk in a stream, or never even known the joy of trying to catch a frog. There are plenty of opportunities to get into nature through the Watershed Patch Program. So peel your scouts away from the television, and give them an experience they will never forget!

- Taking a walk in a stream is a great first step for scouts of all ages. What is most interesting to your group? Do they like looking for animals, or do they enjoy skipping stones? Are there any fossils in the rocks?
- If your scouts notice litter on the streambed, they



Performing a Biological Stream Assessment is a great way for your troop to get their feet wet!

- may be inspired to clean it up! A stream clean-up can be a very rewarding experience. Be sure to alert the local media about your project. Maybe your scouts will get their picture in the paper!
- A biological stream assessment can help your scouts understand how about the health of a stream. Summit SWCD is happy to assist with this kind of stream exploration. Please contact the Summit SWCD office for more information.



**Summit SWCD
Mission Statement**
To provide local leadership and technical assistance for innovative programs to conserve soil, improve water quality, and enhance the natural resources of Summit County.
We are an equal opportunity employer and provider.

The Watershed Patch Program

Taking care of our planet has never been more important. Involve your troop in stimulating discussion, new adventures, and fun community service opportunities through the Watershed Patch Program!

This patch is appropriate for scouts of all ages. Simply pick the activities and projects that best suite your group. This pamphlet gives an outline of the requirements for the patch, and also lists resources for the larger projects. Your scouts will learn positive ways that they can care for their environment

Visit www.summitswcd.org for more information!

Earning Your Watershed Patch

Exploration
Community Involvement
Education



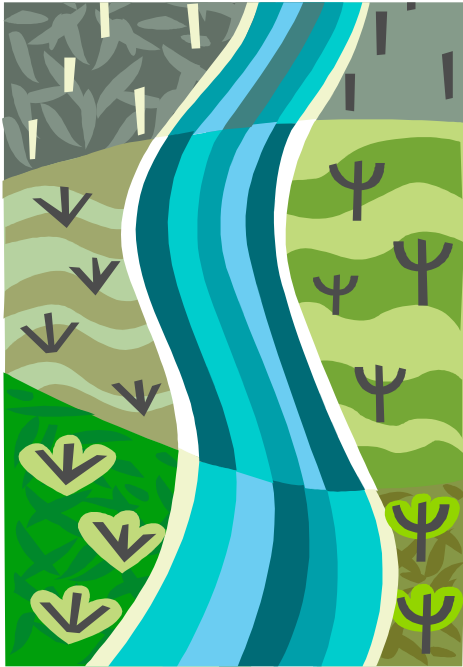
Summit SWCD
1180 S. Main St.
Suite 241
Akron, OH 44301
(330)929-2871

<https://sswcd.summitoh.net>



SUMMIT
SOIL & WATER
CONSERVATION DISTRICT

Earning your Watershed Badge



How to Earn Your Watershed Badge:

Pick out five activities from the suggestions on the right, complete them, and write up your experience with the program. Pick at least one activity from each category. Send the write-up to your local government office, or contact Summit SWCD directly to receive your Watershed Badges.

Exploration

Take a walk in a stream! Exploring the stream environment is a good first step toward understanding our impact on the environment. Does the stream look different when it enters an urban environment?

Explore your neighborhood in the rain! This is a great activity for younger scouts. Grab your raincoats and just start walking! Where does the rain go, and why?

Find out where the water goes when you flush the toilet! Follow the process of cleaning up raw sewage by taking a tour of a wastewater treatment plant. This is sure to be an activity your scouts will remember!

Community Involvement

How clean are the streams in your area? One way to tell is to do a Biological Stream Assessment! By looking at the organisms that live in a stream, the quality of the water can be assessed. Instruction and materials are available through the Summit SWCD.

Clean up a stream in your area! A litter pick-up is a fun and easy activity.

Participate with a stream restoration project! Call Summit SWCD to see if there is one going on in your area.

Misuse of storm sewers is harming our lakes and streams. Educate the people in your neighborhood by affixing brightly colored markers to the storm sewers. Contact SWCD for more information on the Storm Drain Marking Program.

Education

Hold an environmentally themed book discussion for your next scout meeting! Choose a book that best fits your group. Perhaps "The Lorax" for younger scouts, or "Silent Spring" for the older ones.

Borrow an educational model from the Summit SWCD resource library! Our models teach important environmental concepts, and are hands-on educational fun for all age groups.

What watershed do you live in? The Summit County GIS website is a great place to start. Maps are also available through the Summit SWCD office.

Have your scouts educate someone else! Prepare a presentation for a senior center, church, or a preschool. How will your scouts communicate what they have learned?

Writing up your experience with the Watershed Badge Program

Please provide the following information to receive your badges:

Which activities did you complete?

Do you feel that the activities were valuable experiences for your scouts?

What are some of the comments that the scouts made about the activities?

Also, please include the first and last names of the scouts who are applying for badges. Send this write-up to your local town hall, or directly to the Summit SWCD offices, care of the Education Specialist.

Summit SWCD
1180 S Main St. Suite 241
Akron, OH 44301

What is a watershed?

A watershed is an area of land that drains to a particular water body.

Educational Models

The following educational models are available for loan from the Summit SWCD: The Enviroscape, The Groundwater Model, and the Stream Table. Visit the website for pictures and descriptions of these models. www.summitswcd.org

Which activities are best for your scouts?

If you would like some help deciding which activities are most appropriate for your group, feel free to call the Summit SWCD office. The Education Specialist on staff will be happy to offer suggestions. 330.929.2871